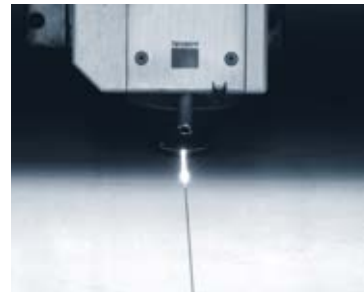
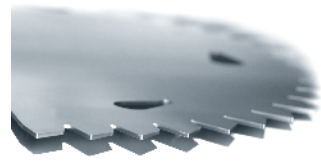
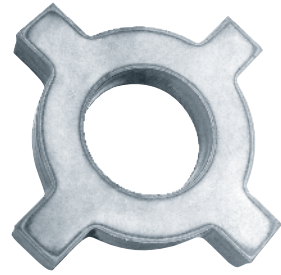
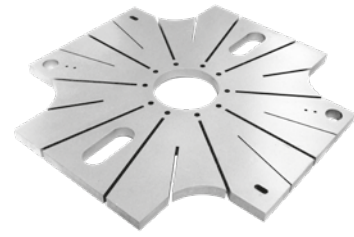


# Cut pieces



## Water jet

**Maximum dimensions:**  
14 x 22 ft

**Maximum thickness:**  
6.0"

## Plasma

**Maximum dimensions:**  
14 x 44 ft

**Maximum thickness:**  
6.0"

## Laser

**Maximum dimensions:**  
14 x 22 ft

**Maximum thickness:**  
1.25"

Send us your files in .dxf format — Tolerances on shape: please contact us for the surface flatness and straightness of your cut pieces.

Supply of complete packages in nickel alloys: JACQUET can also deliver piping accessories, welding products, wrought pieces, screws and bolts...

# Plates

More than 20 grades of stainless steel and nickel alloys,  
Over 2500 tons of material are available from stock.

## Stainless steel

(standard dimensions)

**Thickness:**  
0.125→6.0"

**Format max:**  
120 x 240"

### Tolerances:

**Thickness:**  
ASTM A480  
**Surface flatness:**  
ASTM A480

## Nickel alloys

**Thickness:**  
0.125→2"

**Format max:**  
**in stock:**  
96 x 240"

# Bars

## Stainless steel

**Diameter:**  
0.5→12"

### Flat bars:

**Thickness:** 1/8" – 2"  
Sheared & edged up to 1/2" thick  
True mill bar up to 2" thick

### Grades:

304L/1.4307, 316L/1.4404,  
2205/17.4

## Nickel alloys

**Diameter:**  
0.5→3"

### Grades:

Alloy 400 K500 RW G  
for other grades and dimensions,  
please contact us.

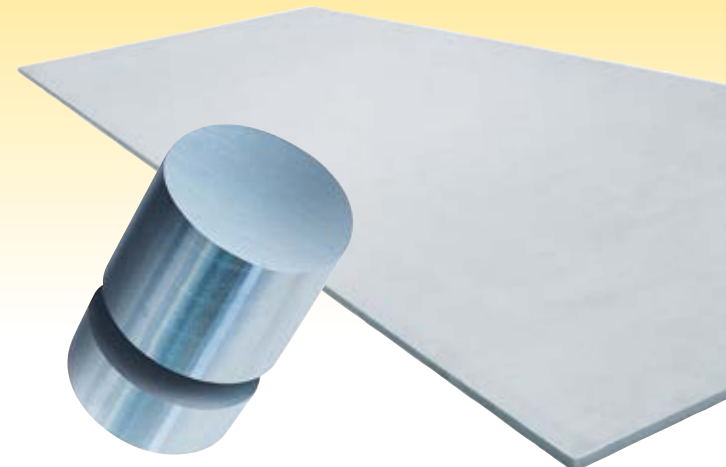
for other dimensions, please contact us.

# Stainless steel

ASTM/AISI	W. Nr.	UNS	EN	Max. thicknesses		
				in stock, in inches	ASTM Bars	Diameter in inches
304	1.4301	S30400	X5CrNi18.10	6		
304/304L	1.4301/1.4307	S30403	X5CrNi18.10/X2CrNi18.10	6	A276	12
304H	1.4948	S30409	X5CrNi18.10	3		
321/312H	1.4541/1.4878	S32100/S32109	X6CrNiTi18.10	2	A276	12
316L	1.4404	S31603	X3CrNiMo17.12.2	6		
347/347H	1.4450	S34700/S34709	X6CrNiNb18.10	2		
317L	1.4438	S31703	X2CrNiMo18.15.4	1		
410	1.4006	S41000	X12Cr13	3		
310S	1.4845	S31008	X8CrNi25.21	2		
2205	1.4462	S32205	X2CrNiMoN22.5.3	3		
630	1.4542	S17400	X5CrNiCuNb16.4	3		
2507	1.4410	S32750	X2CrNiMoN25.7.4	2		
904L	1.4539	N08904	X1NiCrMoCu25-20-5	1		
420	1.4028		X30Cr13	4		

# Nickel alloys

ASTM/AISI	W. Nr.	UNS	ASTM Plates	Max. thicknesses		
				in stock, in inches	ASTM Bars	Diameter in inches
Alloy 200	2.4066	N02200	B162	0.5		
Alloy 201	2.4068	N02201	B162	0.5		
Alloy 400	2.4360	N04400	B127	1.5	B164	3
Alloy 600	2.4816	N06600	B168	1.5		
Alloy 601	2.4851	N06601	B168	0.25		
Alloy 625	2.4856	N06625	B443	1.5		
Alloy 800H	1.4958/1.4876	N08810	B409	2		
Alloy 800HT	1.4959	N08811	B409	2		
Alloy 825	2.4858	N08825	B424	1		
Alloy C276	2.4819	N10276	B575	1.5		
Alloy 20	2.4660	N08020	B463	0.5		
Alloy K500	2.4375	N05500	B865		B886	3



JACQUET is an ISO compliant company and a Level 1 supplier to the navy nuclear program for submarines and aircraft carriers. JACQUET has also been audited and approved by fabrication and distribution companies for supplying cut plate to the commercial nuclear marketplace.

JACQUET is a brand of the Jacquet Metal Service Group, listed on NYSE Euronext Paris

**JACQUET** in the USA is a service oriented stainless and nickel alloy processing company with 5 facilities **strategically located** throughout the USA providing **fast** turnaround and delivery time.

# JACQUET an international presence

**A worldwide leader in the distribution  
of processed stainless steel  
and nickel alloys Quarto plates.  
32 sites in 19 countries.  
9000 clients in 60 countries.**

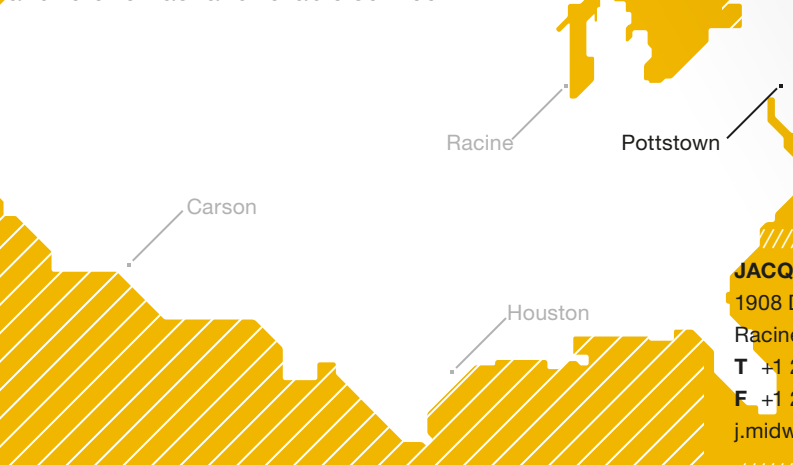
## Locations

Austria  
Belgium  
Canada  
China  
Czech republic  
Denmark  
Finland  
France  
Germany  
Italy  
The Netherlands  
Poland  
Portugal  
Slovenia  
Spain  
Sweden  
Switzerland  
United Kingdom  
United states

**JACQUET Mid Atlantic** is located in Pottstown, PA, one hour northwest of Philadelphia. We are the US headquarters and the largest of the US facilities with over 110,000 SF storing commodity and specialty grades of stainless steel and nickel alloy in plate and round bar.

Our 4 large waterjet machines (15' x 22' tables) and 2 large plasma machines (14' x 44' & 10' x 20' tables) cut up to 6" thick, hold tight tolerances, and run on multiple shifts. Send us your drawing files in .dxf format or we will program drawings and cut per your request.

**JACQUET** is here to service your entire project needs and to offer fast and reliable service.



**JACQUET Mid Atlantic**  
191 South Keim Street  
Suite 108 Pottstown, PA 19464  
**T** +1 484-945-1075  
**F** +1 484-945-1080  
j.midatlantic@myjacquet.com



**JACQUET Midwest**  
1908 DeKoven Avenue  
Racine, WI 53403  
**T** +1 262-898-1381  
**F** +1 262-898-1429  
j.midwest@myjacquet.com

**JACQUET West**  
22400 Lucerne Street  
Carson, CA 90745  
**T** +1 310-684-4370  
**F** +1 310-684-4377  
j.west@myjacquet.com

**JACQUET Houston**  
Willowbrook Industrial Park  
6707 Willowbrook Park Drive  
Houston, TX 77066  
**T** +1 281-397-9920  
**F** +1 281-397-9902  
j.houston@myjacquet.com

**usa.myjacquet.com**

www.jacquetmetalservice.com